

NEWCASTLE LYMPHOEDEMA CLINIC

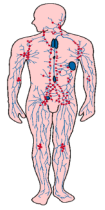
Treatments • Education • Self Help Advice

28 Cathrine Street, Kotara South NSW 2289

Ph/Fax: (02) 49 20 70 10

Email: newlymphclinic@bigpond.com

Website: www.newlymphclinic.com.au



What is Dercum's Disease

Dercum's disease is a painful fat disorder listed as a rare disease by the NIH and NORD according to Karen L. Herbst, Ph.D., M.D.

People with DD have widespread abnormal fat including small, tender nodules that feel like beans in a bag (diffuse DD), large lipomas or angioliipomas (nodular DD), or mixed type with nodules and lipomas.

Additional tissue findings can include swelling, thickening or thinning of the skin, increased connective tissue and fibrosis, and loss of elasticity and distended vessels including varicosities.

The abnormal tender fat can be anywhere from the head to the bottom of the feet with a focus on the arms, neck, chest, low back, abdomen, legs and groin.

Women with DD complain of tender nodules in the vaginal vault and enlarged, swollen and tender labia.

Lymph vessels are dilated allowing lymphatic leakage

Dercum's disease is a pre-lymphedema condition that responds to manual lymph drainage with a reduction in volume and pain.

People with DD may also have gastrointestinal distress and/or pelvic pain dysfunction.

People with DD may also have lymphedema and Lipoedema.

Kristin Osborn
Specialist Lymphoedema and Lipoedema Therapist